

Sit Smarter with LiNX Memory Positions

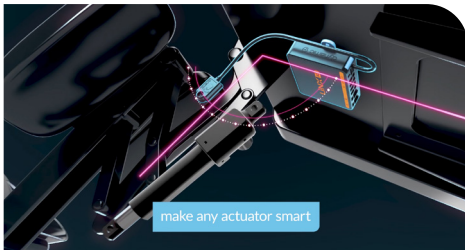
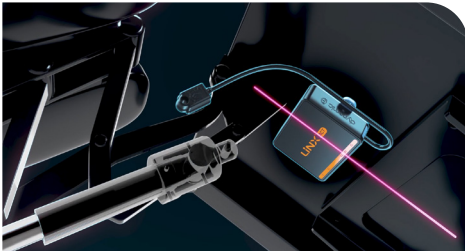
LiNXTM



LiNX Memory Positions

Create powerful, flexible, and smooth seating experiences with the most refined seating control system on the market.

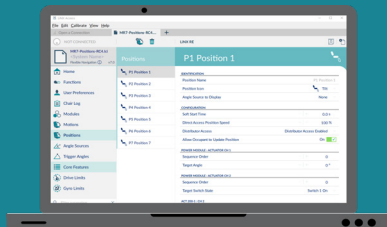
From simple one or two actuator designs, up to complex seating designs with multiple concurrent or sequenced actuators, LiNX has solutions to meet the needs of designers, clinicians and users alike.



Smart technology

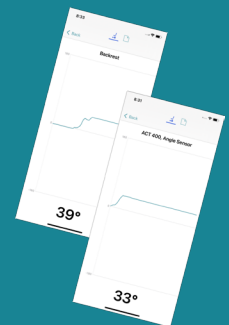
LiNX combines angle sensing technology with actuator control algorithms to automatically take users to a stored seating position with LiNX Memory Positions.

Angle sensors are built into every actuator module as standard, and with the option to add additional Tilt modules, a manufacturer can use angular inputs to control the movement of seating elements either with absolute angles or angles that are relative to each other.



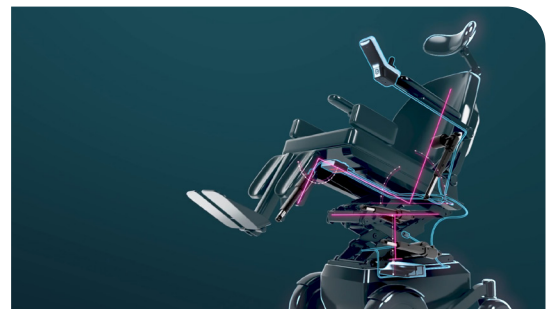
Setting up

Memory positions are set up with standard LiNX modules, software and programming tools. Live diagnostic tools (iOS) make it easy to see angle values and actuator operation in real-time.



For the manufacturer

Every actuator can be made smart with LiNX angle sensing technology because LiNX has 'Sit Smarter' built in: there are no 'special' modules to be stocked and distributed; no complex calibration of actuators required. This reduces development costs so now the manufacturer can provide additional user benefits without additional cost, and create competitive smart seating solutions for any market segment.

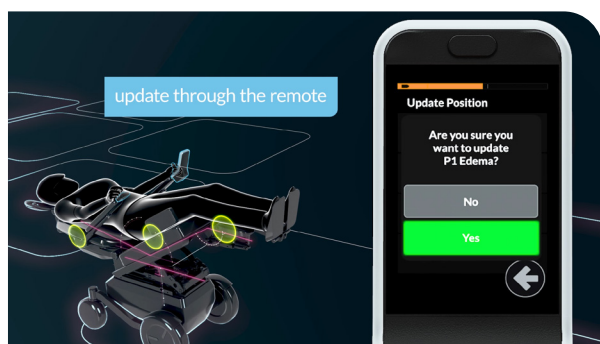


Take advantage of our engineering expertise with your design ambitions to create custom configuration files that can be highly tailored to your precise requirements.

Choice of user control

There are multiple options to activate a memory position:

- an external button(s)
- for users who prefer simpler menus and button access, choose from our range of REM2xx LED remote modules
- for rehab users with more complex needs, the LCD REM400 or REM500 with touchscreen access, allows for full flexibility of menu setup and access methods (swipe, tap, joystick or menu scan).



Flexible configuration

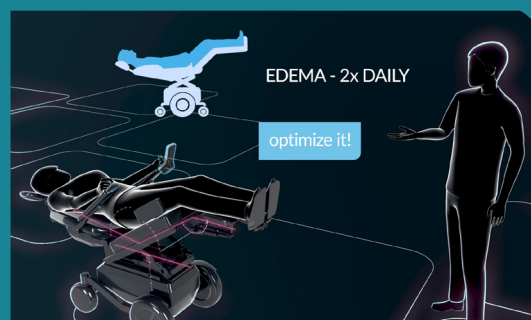
Quickly customize positions in the field, without the need for special tools, using the remote.

For users wanting one touch operation, latched control is available. Press a button once and let LiNX reposition the seating to the desired Memory Position.

Smooth, proportional control gives users full control of their positioning needs.

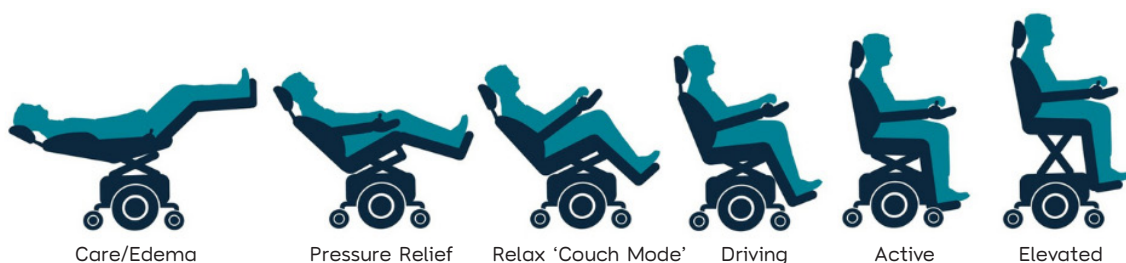
For clinicians

Clinically important positions can be locked so that clients do not change seating angles that are essential to their health and well-being. Clinicians can customise positions for ease of use and comfort for their clients. This is especially useful for clients who may not frequently adopt these positions because it takes too long to adjust each actuator.



For power wheelchair users

Using memory positions is an easy way to adjust multiple actuators into complex positions for transfers, comfort, activities and health. Get precise angle reporting of seating components live on LCD screen-based remote modules. And if they do not like it, they have the power to update a stored position.





ACHIEVE AMAZING EVERY DAY.

Being free to move and express yourself is central to the human experience. Dynamic exists to ensure that all people living with restricted mobility enjoy the same freedoms. We partner with innovative customers to bring freedom of movement and expression through high quality medical mobility control and high-tech connectivity.

Open new worlds

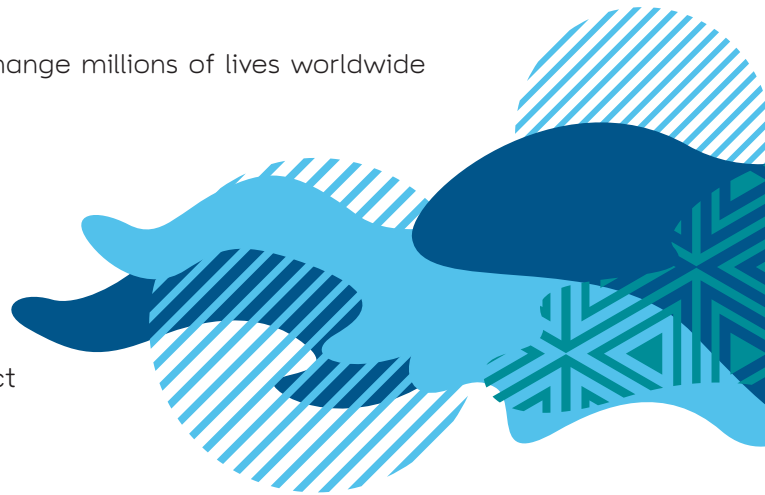
Mobility solutions powered by Dynamic change millions of lives worldwide every day.

Transform your business

Seamless product systems can transform your designs and your business.

Empower better outcomes

Clinicians, retailers and clients can interact more effectively to improve outcomes.



Talk to us about how
Dynamic can help
transform your business
and the lives of your
customers.

Dynamic is a company of Allied Motion Technology who jointly develop, manufacture and sell products for the motion control market. These products include brushed and brushless DC motors, brushless servo and torque motors, coreless DC motors, integrated brushless motor drives, gear motors, gearboxes, modular digital servo drives, motion controllers, incremental and absolute optical encoders and related motion control products.

alliedmotion.com

EUROPE

Ph: +44-1562-826-600
eusales@dynamiccontrols.com

ASIA

Ph: +886-955-335-243
asiasales@dynamiccontrols.com

AUSTRALASIA

(CORPORATE OFFICE)
Ph: +64-3-962-2519
sales@dynamiccontrols.com

Dynamic Controls is the world's leading manufacturer of electronic controls for power wheelchairs and scooters.
Actual products may vary from those featured. Not all products may be available at the time of printing.

QMS Certified to ISO 13485

The Bluetooth® word mark and logos are registered trademarks owned by Bluetooth® SIG, Inc.

